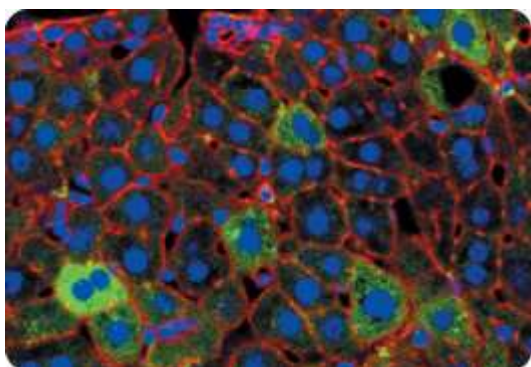


**Label IT® Cy®3 Plasmid Delivery Control Allows Quick Assessment of Delivery Efficiency.** HeLa cells were transfected in serum-containing media with the *Label IT® Cy®3* Plasmid Delivery Control (red) using the *TransIT®-LT1* Transfection Reagent. Twenty-four hours post-transfection, the cells were fixed, then counterstained to locate the nuclei (blue) and to stain the actin (green).



**Visualization of *Label IT®* Fluorescein Plasmid Delivery Control in Liver Sections Following Tail Vein Injection.** *TransIT®-QR* Hydrodynamic Delivery Solution was used to deliver 25 µg of *Label IT®* Fluorescein Plasmid Control (green) to a mouse using hydrodynamic delivery via the tail vein. One hour post-injection the liver was harvested. Sections were fixed to stain the nuclei (blue) and the actin (red).